

The Kingbird

1412 Sq. Ft.
(Includes 316 Sq. Ft.
of Finished Basement)

Bungalow Townhome

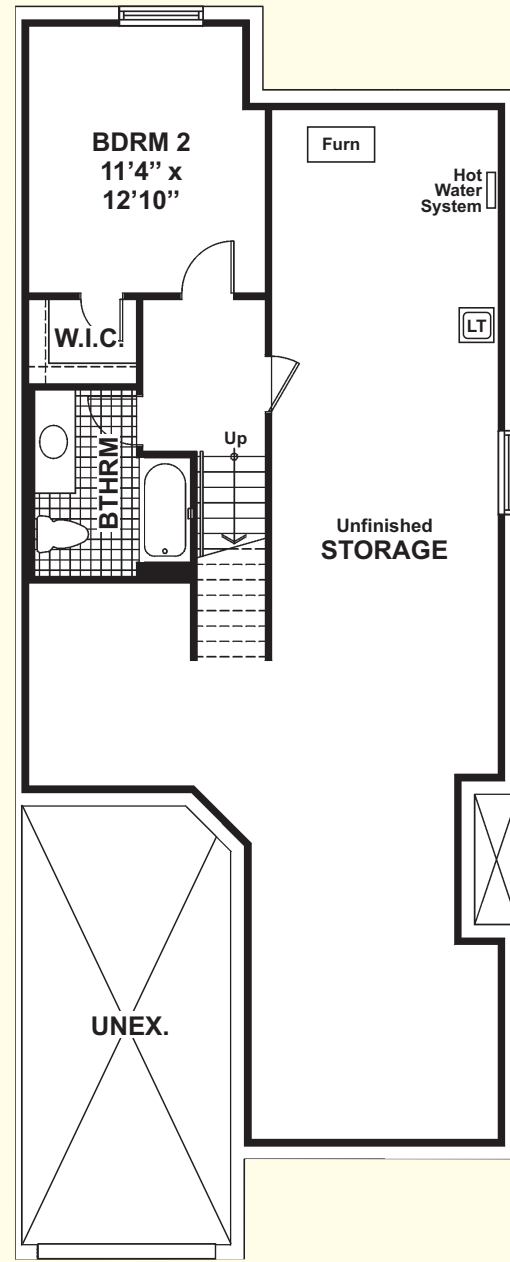


The Kingbird

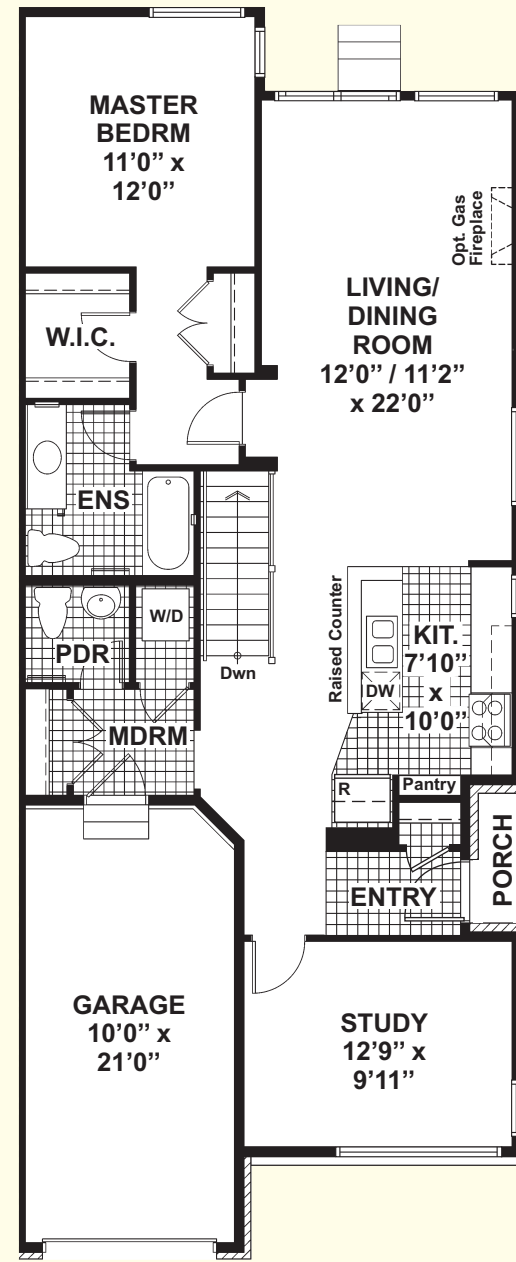
1412 Sq. Ft. (Includes 316 Sq. Ft. of Finished Basement)

Bungalow Townhome
2 Bedrooms / 2.5 Bathrooms

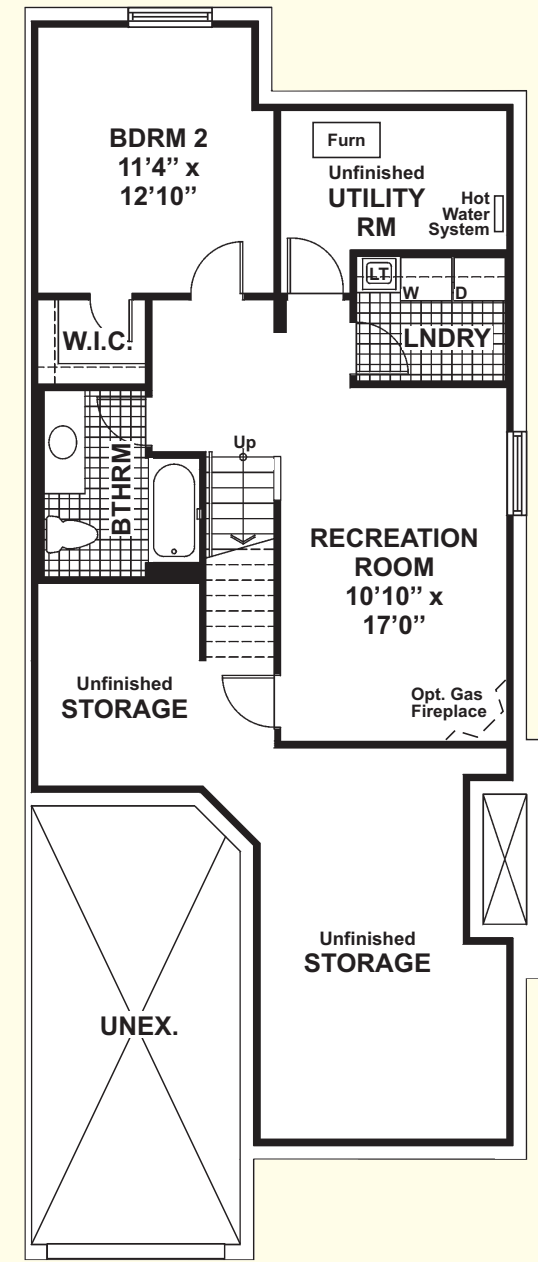
- Side tiled Entry
- 9' ceilings on main floor
- Handy main floor Laundry Room
- Private corner Study is bright & perfect for a home office!
- Open concept Kitchen with pantry & preparation island featuring raised bar counter
- Living / Dining Room is bright & enormous!
- Master Bedroom offers lots of wardrobe storage & 3 pce Ensuite
- Bedroom 2 includes W.I.C. & adjacent 3 pce Bathroom
- Basement provides plenty of room for storage & workshop



Standard BASEMENT
316 Sq. Ft. of Finished Area



GROUND FLOOR



Optional BASEMENT
594 Sq. Ft. of Finished Area

#Bt3 (Corner Unit) E. & O.E. Subject to Change Without Notice. April 3, 2010
Actual usable floor space may vary from the stated floor area.