

**Immediate  
OCCUPANCY**



**Enercare,  
Bell or COGECO  
Incentive  
Package  
(Ask for Details)**

# Feature Townhome



## CAMDEN

3 Bdrms / 2.5 Bthrms / 2160 sq. ft.

(Incl. 450 sq. ft. of Finished Lower Level)

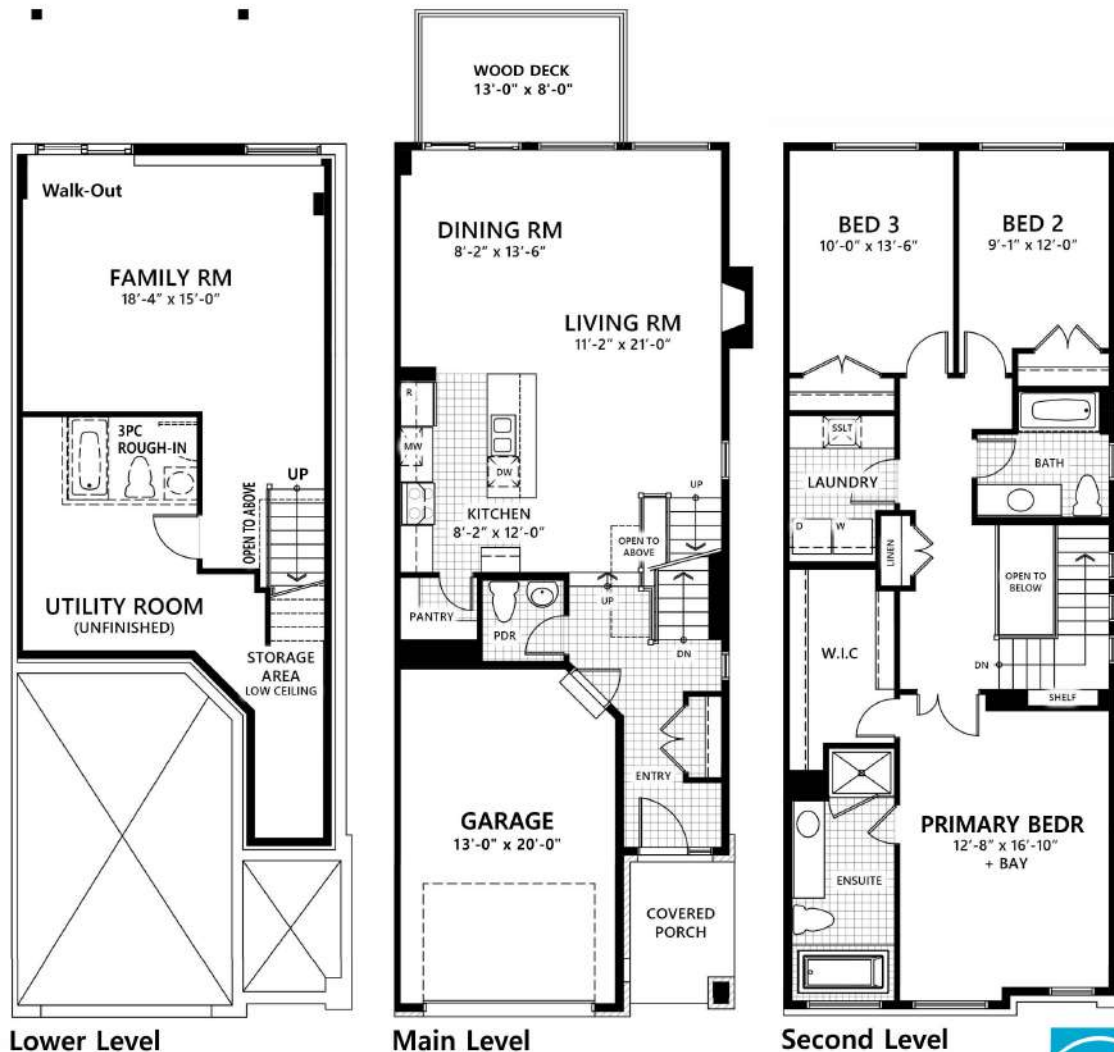
**MODERN ELEVATION - Walk-out lower level**

**- Backs onto Buffer -**

Block 1 / End Unit #40 - 454 Buckthorn Drive

# \$714,800

- Quartz countertops included in kitchen & all bathrooms - Natural gas fireplace in living room - Automatic garage door opener -
- Hardwood flooring throughout main level - Ceramic tile flooring in all wet areas - Air-conditioning - Luxury 4-pce. ensuite w/ free-standing tub -
- White Silgranit undermount kitchen sink w/ matte black pull-down faucet - Pot-lights in kitchen, living room, ensuite & exterior -
- Custom kitchen cabinetry in white, including quartz countertops, glass accents & hidden hood vent within custom wood cabinetry, large island w/ overhang for seating, walk-in pantry, ceramic tile backsplash & under-cabinet pot-lighting -



Lower Level

Main Level

Second Level

MON - THURS - Noon to 7pm SAT & SUN - 11am to 4pm Closed Fridays

**(613) 766-8140**  
**(613) 545-2500**

Sales Representative:  
**Jacqueline Collier**  
jcollier@tamarackhomes.com

**TAMARACK**  
TAMARACKHOMES.COM



Subject to Change  
Without Notice.  
E. & O. E.  
\* August 13, 2024