

Immediate OCCUPANCY



Enercare, Bell or COGECO Incentive Package
(Ask for Details)

Feature Townhome



CAMDEN

3 Bdrms / 2.5 Bthrms / 2160 sq. ft.

(Incl. 450 sq. ft. of Finished Lower Level)

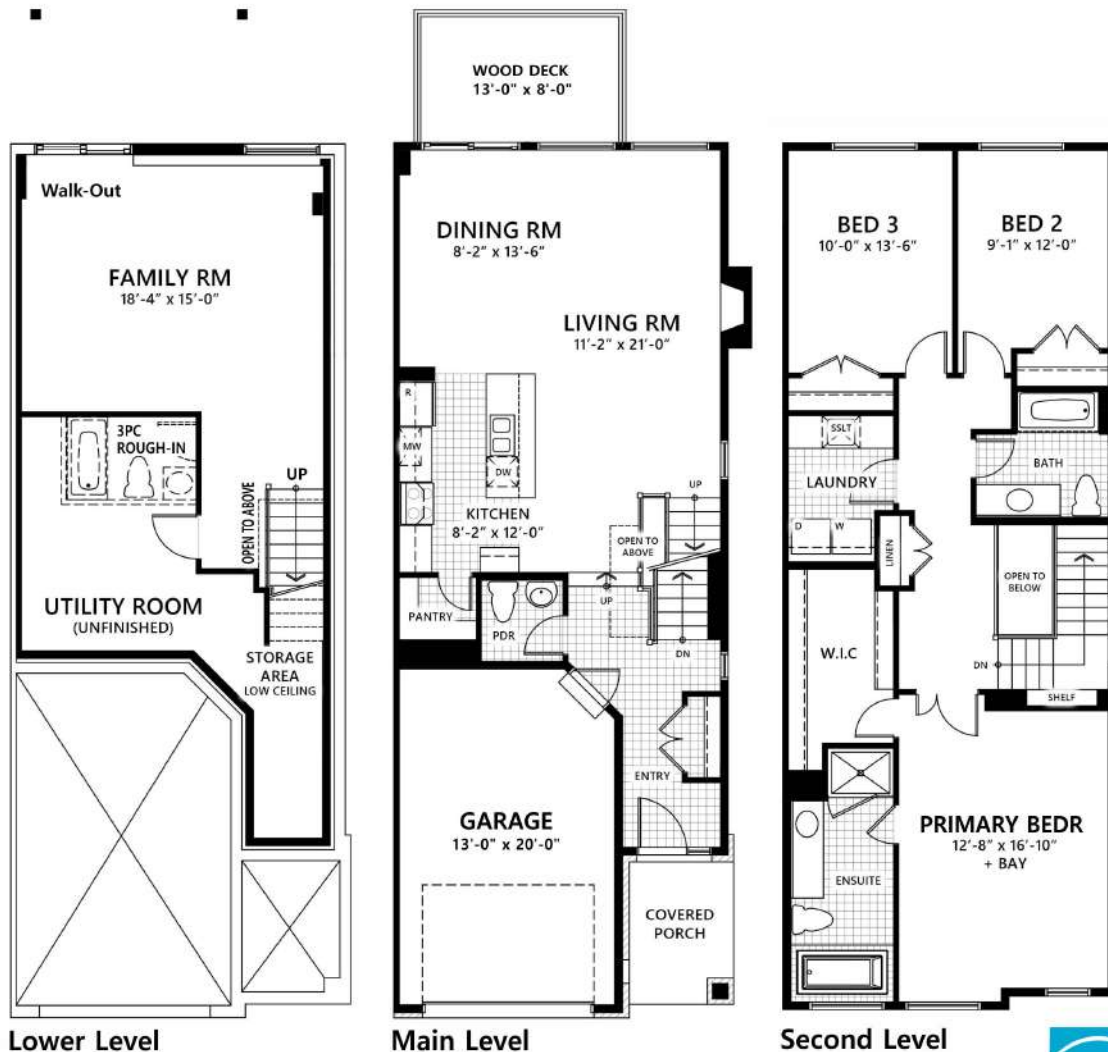
CRAFTSMAN ELEVATION - Walk-out lower level

- Backs onto Buffer -

Block 2 / End Unit #43 - 448 Buckthorn Drive

\$714,800

- Quartz countertops included in kitchen & all bathrooms - Natural gas fireplace in living room - Automatic garage door opener -
- Hardwood flooring throughout main level - Ceramic tile flooring in all wet areas - Air-conditioning - Luxury 4-pce. ensuite w/ free-standing tub -
- White Silgranit undermount kitchen sink w/ matte black pull-down faucet - Pot-lights in kitchen, living room, ensuite & exterior -
- Custom kitchen cabinetry in white, including quartz countertops, glass accents & hidden hood vent within custom wood cabinetry, large island w/ overhang for seating, walk-in pantry, ceramic tile backsplash & under-cabinet pot-lighting -



MON - THURS - Noon to 7pm SAT & SUN - 11am to 4pm Closed Fridays

(613) 766-8140
(613) 545-2500

Sales Representative:
Jacqueline Collier
jcollier@tamarackhomes.com

TAMARACK
TAMARACKHOMES.COM



Subject to Change
Without Notice.
E. & O. E.
* August 13, 2024